

# RAD CALIBRATION SYSTEMS

## Highly accurate calibration systems



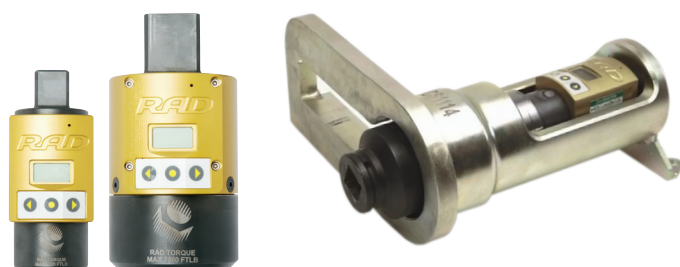
The RAD Calibration Systems have earned their place in calibration laboratories worldwide because of their high accuracy and repeatability.

Introducing the solution for big torque tools - RAD Torque's Large Calibration Stand. With the power to calibrate tools up to a whopping 18K ft. lbs./24K Nm, precision meets extreme performance. The Large Calibration Stand is paired with RAD's Smart Sockets (12K and 18K\*) to calibrate in two different sizes.

### Small calibration system

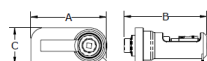
#### TRANSDUCER FEATURES

- Ranges up to 7,000 ft. lbs./ 9,500 Nm
- Screen on transducer allows for convenient reading
- Connect to RAD Torque Transducer Software via your computer or tablet
- Classified to BS 7882:2017 as Class 1 or better for the primary range (+/-0.5% of reading from 20% to 100% of full scale)



TRANSDUCER

SMALL CALIBRATION SYSTEM



#### IMPERIAL

PART NUMBER	DESCRIPTION	TORQUE (ft. lbs.)		DRIVE SIZE	WEIGHT (lbs.)	DIMENSION A	DIMENSION B	DIMENSION C
		LOW	HIGH					
23442	RAD CALIBRATION SYSTEM 1500	75	1500	1.0"	4	11.75"	11.53"	5.50"
23443	RAD CALIBRATION SYSTEM 3500	175	3500	1.5"	10	14.50"	13.53"	7.00"
23444	RAD CALIBRATION SYSTEM 7000	350	7000	1.5"	11	14.50"	13.53"	7.00"

#### METRIC

PART NUMBER	DESCRIPTION	TORQUE (Nm)		DRIVE SIZE	WEIGHT (Kg)	DIMENSION A (mm)	DIMENSION B (mm)	DIMENSION C (mm)
		LOW	HIGH					
23442	RAD CALIBRATION SYSTEM 1500	100	2000	1.0"	1.8	298	293	140
23443	RAD CALIBRATION SYSTEM 3500	250	4750	1.5"	4.5	368	344	178
23444	RAD CALIBRATION SYSTEM 7000	475	9500	1.5"	4.9	368	344	178

### NEW! LARGE CALIBRATION SYSTEM

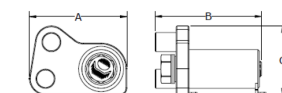


LARGE CALIBRATION SYSTEM

INCLUDED 12K & 18K\* SMART SOCKETS™

#### SYSTEM FEATURES

- 4340-material bolt, heat-treated for unparalleled strength and durability
- Optional 12K or 18K\* Smart Sockets, delivering accurate data logging for all your calibration needs
- Secure shipping crate to protect your investment



#### IMPERIAL

PART NUMBER	DESCRIPTION	TORQUE (ft. lbs.)		DRIVE SIZE	WEIGHT (lbs.)	DIMENSION A	DIMENSION B	DIMENSION C
		LOW	HIGH					
30526	RAD 12K CALIBRATION SYSTEM	600	12K	1.5"	235	15.08"	19.70"	10.60"
33736	RAD 18K CALIBRATION SYSTEM*	900	18K	2.5"	235	15.08"	19.70"	10.60"

#### METRIC

PART NUMBER	DESCRIPTION	TORQUE (Nm)		DRIVE SIZE	WEIGHT (Kg)	DIMENSION A (mm)	DIMENSION B (mm)	DIMENSION C (mm)
		LOW	HIGH					
30526	RAD 12K CALIBRATION SYSTEM	800	16K	1.5"	106.5	383	501	270
33736	RAD 18K CALIBRATION SYSTEM*	1200	24K	2.5"	106.5	383	501	270

\*Must be used with a deep reaction arm.